



Painting created by a Twelveacres resident

“LET THERE BE LIGHT”

BY MARK FLEMING, *EXECUTIVE DIRECTOR*

As I ponder Twelveacres’ metaphysical focus this year on “Behold,” I have appreciated the importance of “light” in beholding God and His creation. The very first declaration in Genesis by God on the first day is: “Let there be light . . .” (Genesis 1:3). And action took place. What a powerful command to behold! Gaining a clearer understanding of spiritual creation and reflection is an important part of our work at Twelveacres, following Christ Jesus’ example and his counsel, “While ye have light, believe in the light, that ye may be the children of light.” (John 12:36).

Each day Twelveacres witnesses qualities of light in the residents. Whether in the home environment, their activities, or during the care we provide, there is expectancy of healing. The light of Mind brings illumined, clear thinking throughout our organization. The light of Love brightens with warmth, comfort, peace, safety. The light of Truth reveals freedom, the true purpose of Twelveacres. The light of Life brings vitality, growth, progress, and renewal to the residents, staff and the whole organization. We are blessed to see resident progress, some examples of which we shared throughout this newsletter. We have also included additional highlights of organizational progress during the year on page 2.

“TRUTH AND LOVE ENLIGHTEN THE UNDERSTANDING, IN WHOSE ‘LIGHT SHALL WE SEE LIGHT;’ AND THIS ILLUMINATION IS REFLECTED SPIRITUALLY BY ALL WHO WALK IN THE LIGHT AND TURN AWAY FROM A FALSE MATERIAL SENSE.” (SCIENCE & HEALTH 510:9)

The powerful qualities of light touch everyone and shine collectively brighter. Collaboration with other organizations is a natural approach for Twelveacres in supporting each individual’s growth and interaction with others. Together, our Twelveacres family is focused on the whole man, including moral and social behavior, church and community engagement, the spectrum of communication and life-skills. The opportunity for this extends beyond the home into the community. We collaborate with both Christian Science organizations and other community groups to provide a more enriched path. Two of these community support organizations were invited to share some of their inspirations in this newsletter (see pages 4 & 5).

We truly appreciate the impact of your individual and collective support and prayerful work. Every time you give a metaphysical treatment on man’s origin and freedom, on man’s right thinking and action, on man’s infinite abilities, you are helping Twelveacres and other families around the globe. The light of Mind, Truth, Life, and Love, shining forth, eliminates all false claims.

Thank you for joining with us in this effort and supporting our mission!

2019 HIGHLIGHTS



Provided consultation to Christian Science families nationwide on topics of Christian Science nursing care, engagement with Christian Science churches/Sunday Schools, and conservatorship.



Collaborated further with organizations serving the same community, including Rainbow Valley Resource Network, Wellspring Gardens, and other Christian Science nursing organizations.



Increased our Christian Science nursing team with one new full-time staff member and one college worker. Added another volunteer to assist and participate with residents during weekly activities.



Continued staff Christian Science nurses training through the Fern Lodge program and enlisted ongoing staff mentoring from *Journal*-listed Christian Science nurses.



Obtained staff housing for visiting Christian Science nurses and summer workers.



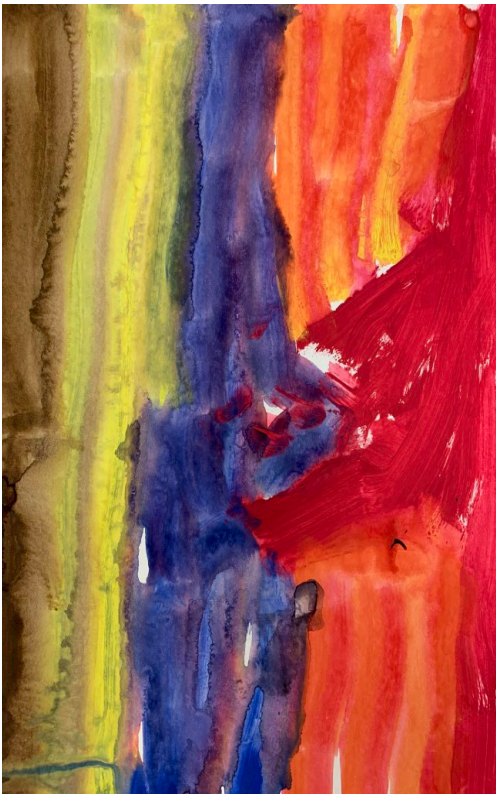
Updated homes with repairs and capital improvements, including new energy efficient windows for Lily House.



Utilized Christian Science nursing skills learned in the Fern Lodge training program to care for three residents while they progressed in physical healing at home, in lieu of temporarily moving to a Christian Science nursing facility. Engaged additional staff to provide specialized personal care, and lifting and mobility assistance.



“. . . BEHOLD, THE ANGEL OF THE LORD CAME UPON HIM,
AND A LIGHT SHINED IN THE PRISON . . .” (ACTS 12:7)



Painting created by a Twelveacres resident

Sometimes we don't know or see the effect of our prayers. But that doesn't mean they aren't effective. The Bible gives a powerful reminder of the importance of our prayers for mankind, including our fellow Christian Scientists, in the account from Acts when Peter is released from prison. King Herod has Peter arrested and put in prison, where sixteen soldiers are assigned to guard him. For good measure, Peter is shackled with chains and placed between two soldiers, with more "keepers" standing watch outside the door.

Peter falls asleep. When God sends an angel and illumines the prison with light, Peter thinks he is dreaming. He nonetheless obeys the specific instructions given him by the angel, who delivers a blow to Peter's side to get his full attention! As soon as Peter heeds the angel's command to arise quickly, his chains simply fall off. Then the angel directs Peter to get dressed and follow him. Peter obeys and is led through the prison and out into the street. The steps Peter needs to take to be free are instant, unquestioning, orderly. He doesn't dilly dally or stop to ask the angel, "Where are we going?" Once outside, Peter realizes that he is awake, not dreaming, and that God has delivered him from the prison and from whatever further punishment Herod had planned for him.

The point is that as Peter is dutifully obeying each of the angel's directives, he has no idea what the outcome will be. He is putting his full trust in God and in God's angel messenger.

Now, given what we know of Peter, it is likely that he was praying before he fell asleep. But it's important to note that, at the same time "prayer was made without ceasing of the church unto God for him" (Acts 12:5). The prayers of that church are a lesson we can all take to heart: our prayers for those dear ones who are held in the shackles of false and limiting beliefs are very much needed. In fact, our prayers help free them from those very shackles.

Just as Peter needed to drop his chains and get dressed before he was led out of prison, at Twelveacres we need to obediently take steps in an orderly fashion so that our organization, including each of our residents and staff, can progress. In this newsletter, we share examples of freedom our residents are expressing. And, like Peter, we too are blessed by the prayerful support of our friends in the church.



*The most effective care we offer is the practice of Christian Science. We truly appreciate your support of our mission.
Your prayers for Twelveacres do make a difference.*

FRANCESCA KARPEL
BOARD PRESIDENT
TWELVEACRES

LOVE'S CIRCLE OF LIGHT

Recently I saw a short video on LinkedIn, in which a gaggle of young basketball players jostled over the ball, the blue team closing in on the white team's basket. All at once they slowed down, as the tallest boy — number 50 in blue — caught the ball and held it. Instead of shooting, he made room for the smallest boy, number '0', who appeared to be developmentally challenged as he ambled awkwardly into center court. The taller boy helped his teammate hold the ball and aim, while the other players stood still, watching in anticipation. With four hands on the ball, together they threw it, and it almost landed in the basket. All the players then raced to the other side of the court, number '0' pumping his fists joyously and high-fiving his loving coaches as he ran past them.



Painting created by a Twelveacres resident

I recognized something sublime in that tender, selfless moment, because I've seen it in my own children — in the relationship between my son, who is in high school, and his younger sister, who has a label of "special needs." To outward appearances, it might seem a bit unfortunate; however, what is prominent in my thought is, "If only everyone knew the joy of loving in this way!"

Raising a child with special needs has taught me many things, and while the path has been rugged at times, it has stretched my family to raise the bar in how we manage our thoughts and actions.

When I am willing to see the spiritual wholeness in another and put aside any false sense of their selfhood, I find my own spiritual wholeness and true selfhood, too. To me, this is synonymous with "love thy neighbor as thyself," as Christ Jesus taught.

In my work supporting the Christian Science families of children with special needs, we have a motto: "Circle of love, circle of support." Often new volunteers in our program say they initially believed they were the givers and the RVRN participants were the receivers. But soon they discover that God is the Giver, that His Christly love is already within each volunteer and participant, and that this spiritual love shines forth from each one. Indeed, Love's light encircles and blesses all alike. There is no greater joy than witnessing Christ's healing compassion meeting all our needs in tangible ways as it brings out the inherent divine goodness in us all.



BY JULIE FINNIN DAY
CHAIRMAN & EXECUTIVE DIRECTOR
RAINBOW VALLEY RESOURCE NETWORK

HEALING PROGRESS TWELVEACRES RESIDENTS

A resident appeared to be in pain when walking. Upon prayerful support from his practitioner, he quickly was free and returned to daily activities.

Recently, a resident began to be more engaged and verbal, making audible choices and frequently thanking staff for their assistance.

Typically very soft spoken, a resident recently stood up and gave a testimony of gratitude during a Wednesday evening church service.

A resident has made steady progress during a recent mobility challenge. While usually quite independent, he initially resisted extra staff assistance. However, throughout recovery, receptivity and gratitude emerged.

MAKING A DIFFERENCE

Twelveacres had the opportunity to talk with Roger Young, the Program Manager for Abilities United, a local day program which two of our residents attend and learn life skills.

What gives you joy in working with your clients?

It gives me great joy to help people realize THEIR hopes and dreams in the context of the community. I really enjoy helping people live the lives they choose.

What is your educational background?

I have a degree equivalent to a Master of Biblical Studies and Education. I graduated from Northeast Bible College in 1975. I have also taken classes at Stanford on Support for People with Autism. I was also an Adjunct Professor at Bethany University, an accredited college, where I taught Age Level Development of Children and Education of Children.



Why did you decide to pursue a career in education for special needs adults?

I have been an Elementary School Principal, Manager of a Semi-Congregate Retirement Facility and an ordained pastor. Throughout my life I have tried to support people with special needs and incorporated it at the places I worked by providing customer support for people with disabilities at those institutions. My mother and brother had mental illnesses, and I became sensitive to people with special needs from my experience in my youth.

What do you enjoy about working with the Twelveacres residents?

They are happy, healthy and engaging. During the past ten years, their love for and interaction with others has inspired me and all those around them. They really enjoy giving back to others in the community.

Your respect for all clients as individuals and their religious rights is so appreciated. What does this require when someone has a challenge to meet?

It requires that we be knowledgeable of their faith and beliefs and respect them accordingly. To do that effectively, it means we have and maintain good communication with them, their families and Twelveacres.

What have you and your staff done to support them in working out a challenge during the day?

We ask them what they need and want, and stay knowledgeable of their needs by also communicating with their caregivers. We consider this a team effort with the participant's stakeholders.

ROGER YOUNG, PROGRAM MANAGER
ADULT DAY ACTIVITIES / COMMUNITY CONNECTION
ABILITIES UNITED



Painting created by a Twelveacres resident

HEALING PROGRESS: A Twelveacres resident has been more peaceful and able to quietly join the congregation during church services.

LIGHT OF LIFE

Working with the Twelveacres residents has been such a blessing to me. I am inspired by their commitment to demonstrate Christian Science healing and purpose in their daily activities. Joy is evident as they interact with other residents, staff and in their local communities. I have learned so much and am privileged to assist these individuals. Twelveacres is much more than a non-profit serving a select number of individuals. It's an idea from God. An idea that can open hearts and be shared with the world. There is such an opportunity for spiritual growth in this area of Christian Science nursing.

AMY HELLYER
PROGRAM DIRECTOR
Twelveacres



Dear Twelveacres,

First, I would like to thank Twelveacres for allowing me to volunteer with the wonderful ladies at Lily House. They are all so sweet and are true examples of God's perfect child. I learned a lot about volunteering there, as it was definitely very different from my high school experience. Because Lily House is dedicated to non-ambulatory residents, it was a new challenge. Sometimes I felt like I wasn't reaching them or doing enough with them, but I always left knowing that they felt my effort and were happier because of it. I think they just really engaged in our communication. Even if there is no verbal response, and I'm the only one talking, I see their eyes light up and soft smiles. They love being around people and receiving attention. Some of my favorite things to do with the residents were reading together and going on walks with them.

The staff at Lily is great. It is a solid team and those residents are in great hands.

Thank you again for everything!

Allison Borch, Volunteer



SHARE YOUR TALENTS AND LOVE IN HELPING FELLOW CHRISTIAN SCIENTISTS.

TO VOLUNTEER PLEASE CONTACT MARK FLEMING, EXECUTIVE DIRECTOR 408.341.0400 x102 | DIRECTOR@TWELVEACRES.ORG

YOUR GIFT IS ESSENTIAL

TWELVEACRES BOARD OF DIRECTORS

President

Francesca Karpel
Belmont, CA

Vice President

Nancy Battey
Walnut Creek, CA

Treasurer

Tim Ames
Arroyo Grande, CA

Secretary

Jeannie L'Heureux
Hayward, CA

Heather Beck
Chesterfield, MO

Jane Faller
San Mateo, CA

Kristin Messer
San Francisco, CA

Mike Ritter
Avila Beach, CA

David Schmidt
St. Helena Island, SC

Jean Wehren
Vista, CA

ADMINISTRATION
Mark Fleming
Executive Director

Amy Hellyer
Program Director

**TWELVEACRES
FALL 2019
NEWSLETTER**

PUBLISHER
Twelveacres, Inc.
286 E. Hamilton Ave.
Suite F
Campbell, CA 95008

Phone: 408.341.0400
Fax: 408.341.0411

DESIGNER
Andrew Thomsen

PHOTOGRAPHER
Fiona Holden

www.twelveacres.org



WE NEED YOUR HELP TO ENSURE TWELVEACRES IS ACCESSIBLE TO THOSE WHO WILL BENEFIT FROM OUR SERVICES AND CHRISTIAN SCIENCE CARE.

— PLEASE CONSIDER A YEAR-END GIFT —

Your gift helps sustain a healing environment for residents, attract/retain and train staff, maintain our homes, and welcome new residents.

Please also consider us in your charitable estate planning.

Together, our prayers and actions foster progress and freedom.

IN HONOR OF

Nancy Battey
Elissa Charles
Gene DeBolt
Everyone

Amy L. Hellyer
Sandi Justad, C.S.
Richard L'Heureux
Amy Long

Laura Spaulding
Peter Michael Untch
Melinda Wehren

IN MEMORY OF

Mark Agnew
Ron Ballard, C.S.B.
John L. Burnett
Lois Carlson, C.S.B.
Roland Carpenter
James J. Coleman
William Milford Correll, C.S.B.
Phil Davis, C.S.B.

Joe Eller, C.S.B.
Vernon Gerdau
David Howell
Betty Johnson
Robert A. Johnson, C.S.B.
Adrian Marshall
Lisa Ritterbuck
Ricardo Saldivar, C.S.B.

Ann Spaulding, C.S.B.
Chuck Spaulding
Constance Untch, C.S.
Dr. Karl Untch
Lin Watts
Patricia Woodbury

2020 TWELVEACRES WISH LIST

Foldable Bathroom Grab Bars

Braeburn House
\$150

2 Electric Stoves

Braeburn & Lily Houses
\$650 each

Back-up Power Generator

Braeburn House
\$2,500

2019 FULFILLED ITEMS

THANK YOU!

Pots & Pans

Braeburn & Bucknall Houses

Wheelchair Van Tie-Down Straps

Corelle Dishes
Lily House

Patio Furniture

Braeburn House



TWELVEACRES

286 E Hamilton Ave., Suite F, Campbell, CA 95008

ADDRESS SERVICE REQUESTED

Forwarding and Return Postage Guaranteed



Painting created by a Twelveacres resident

“FOR WITH THEE IS THE
FOUNTAIN OF LIFE: IN THY
LIGHT SHALL WE SEE LIGHT.”

PSALMS 36:9 KJV

PLEASE DONATE ONLINE

www.twelveacres.org

YOUR GIFT HELPS FULFILL OUR MISSION.

Send special instructions to info@twelveacres.org
or mail the enclosed envelope.

**IF YOU HAVE A FRIEND OR FAMILY MEMBER
SEEKING HEALING OF DEVELOPMENTAL
CHALLENGES WHO WOULD BENEFIT FROM
A CARING RESIDENTIAL ENVIRONMENT,
PLEASE CONTACT US FOR A CONSULTATION.**

For more information about Twelveacres and
other possible resources, please contact our
Program Director:

Amy Hellyer 408.341.0400 X104,
program@twelveacres.org

